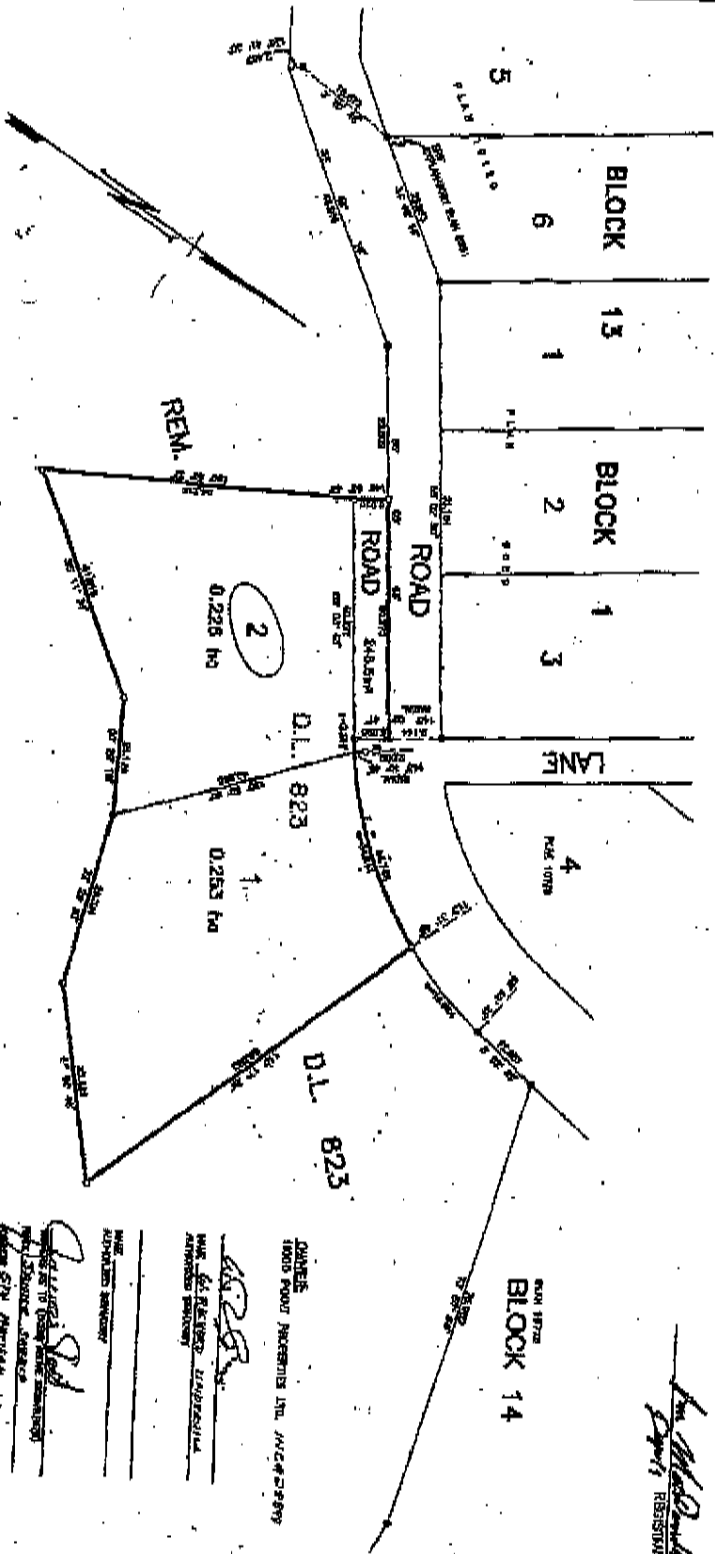


SUBDIVISION PLAN OF A PORTION OF
 D.L. 823, GP. 1, N.W.D. EXCEPT PORTIONS IN PLAN 9089,
 10120, 10430, 10778, 16693, 22059 AND LMP2144
 B.C.G.S. 926-044

PLAN BCP 21244

REGISTERED IN THE LAND TITLE OFFICE
 AT NEW WESTMINSTER, B.C. THIS 29th
 DAY OF MAY 2002



APPROVED UNDER THE LAND TITLE ACT
 OF BRITISH COLUMBIA BY THE REGISTRAR OF LANDS
 AND SURVEY ON 29 MAY 2002

[Signature]
 REGISTERED PROFESSIONAL LAND SURVEYOR

LEGEND:
 BOUNDARIES AND DIMENSIONS ARE NOT CONTROLLED FROM PLAN 10028

ROADS
 PAVED PAVES
 UNPAVED UNPAVED PAVES

ALL DIMENSIONS ARE IN METERS AND DECIMAL FRACTIONS
 UNLESS OTHERWISE SPECIFIED

OWNER:
 LAND FROST INCORPORATED LTD. INC. #22899

[Signature]
 REGISTERED PROFESSIONAL LAND SURVEYOR

REGISTERED PROFESSIONAL LAND SURVEYOR:
[Signature]
 REGISTERED PROFESSIONAL LAND SURVEYOR

COOPERATING SURVEYORS:
 REGISTERED PROFESSIONAL LAND SURVEYORS

[Signature]
 REGISTERED PROFESSIONAL LAND SURVEYOR